



apac.idec.com

A RELIABLE, VERSATILE OPERATOR INTERFACE THAT MAINTAINS HIGH PERFORMANCE IN HARSH WORKING ENVIRONMENTS. THE GLASS PCAP TOUCH PANEL PREVENTS MECHANICAL DURABILITY ISSUES.

# HG1J

Operator Interface with PCAP Touchscreen

The HG1J HMI provides IoT-enabled control and monitoring functions on a vivid color display. The glass PCAP touch panel is responsive and resistant, protecting against damage, water and dirt, and the long-term effects of UV rays.

SWITCHES

SAFETY

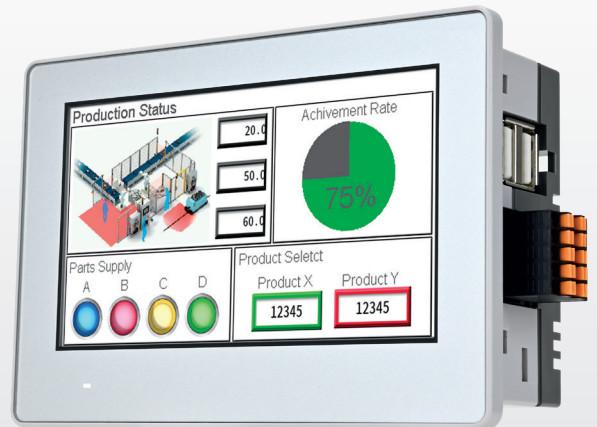
PANEL

**AUTOMATION**

## MAIN APPLICATIONS

The HG1J demonstrates its capabilities best in demanding environments:

- Food and packaging plants
- Hot/cold storage and processing
- Wet/dirty work environments
- Large-scale warehouses and factory floors
- Multiple (remote) locations



## TECHNICAL FEATURES

- 4.3 inch tempered glass PCAP touchscreen
- Rated IP66F/IP67F for water resistance
- Wide operating temperature range (-20 to +55°C)
- Compatible with open network protocols
- IoT functionality
- Dedicated programming software



# HG1J

A COMPACT HMI FOR VARIOUS APPLICATIONS

## CUSTOMER BENEFITS

- Slimline bezel: smart design maximizes the display area.
- Environmental resistance: resilient against water, oil, dust, and scratches.
- Push-in terminal block: quick and simple wiring, space-saving installation.
- Long-term clarity: UV resistance prevents the glass from clouding.
- Easy programming: intuitive layout, script function, supports user communication protocols.

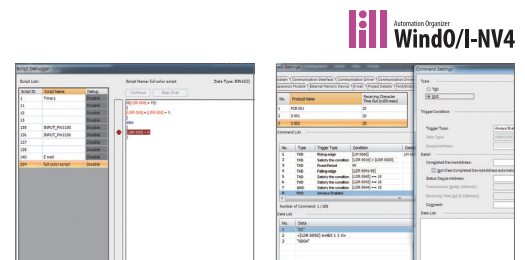
## END-USER EXPERIENCE

- High display visibility and 32 brightness level options.
- Strong IP66F/IP67F rating, tested with direct water jet sprays.
- Resistant to activation by water droplets, supports multi-touch sensing.
- Can be operated while wearing rubber gloves up to 1.5mm thick.\*
- Panel can be safely cleaned with disinfectant or alcohol.

\* The touchscreen may not work with gloves less than 1.5mm thick, depending on the material or environment. Check the operation in the actual environment or under similar conditions.

## DEVICE CONNECTIVITY AND CONTROLS

- Compatibility with external devices allows for highly customized systems
- Acts as a gateway between work environments and the cloud for quick, wireless data transfer
- WindO/I-NV4 software (part of Automation Organizer)
- Software supports custom protocols, has a script function, image library, and simulation mode
- Device status and alerts for connected equipment can be shared by email



## INDUSTRY APPLICATION: MULTIPLE REMOTE LOCATIONS

Large-scale operations across several sites can be difficult to monitor. Additional travel involved in fixing breakdowns adds to equipment downtime and costs. Reliable, IoT-enabled devices are needed to effectively manage these work sites remotely.

- Remote controls and monitoring from a tablet via the web server function
- Dedicated iOS/Android app, Wi-Fi connectivity via USB dongle
- Open network protocols and cloud connectivity reduce labor needs on site
- Stable in hot/cold environments (unmanned sites without temperature control)



[Visit the product page](#)

[Consult the brochure](#)

apac.idec.com  
marketing.apac@idec.com

**IDEC**